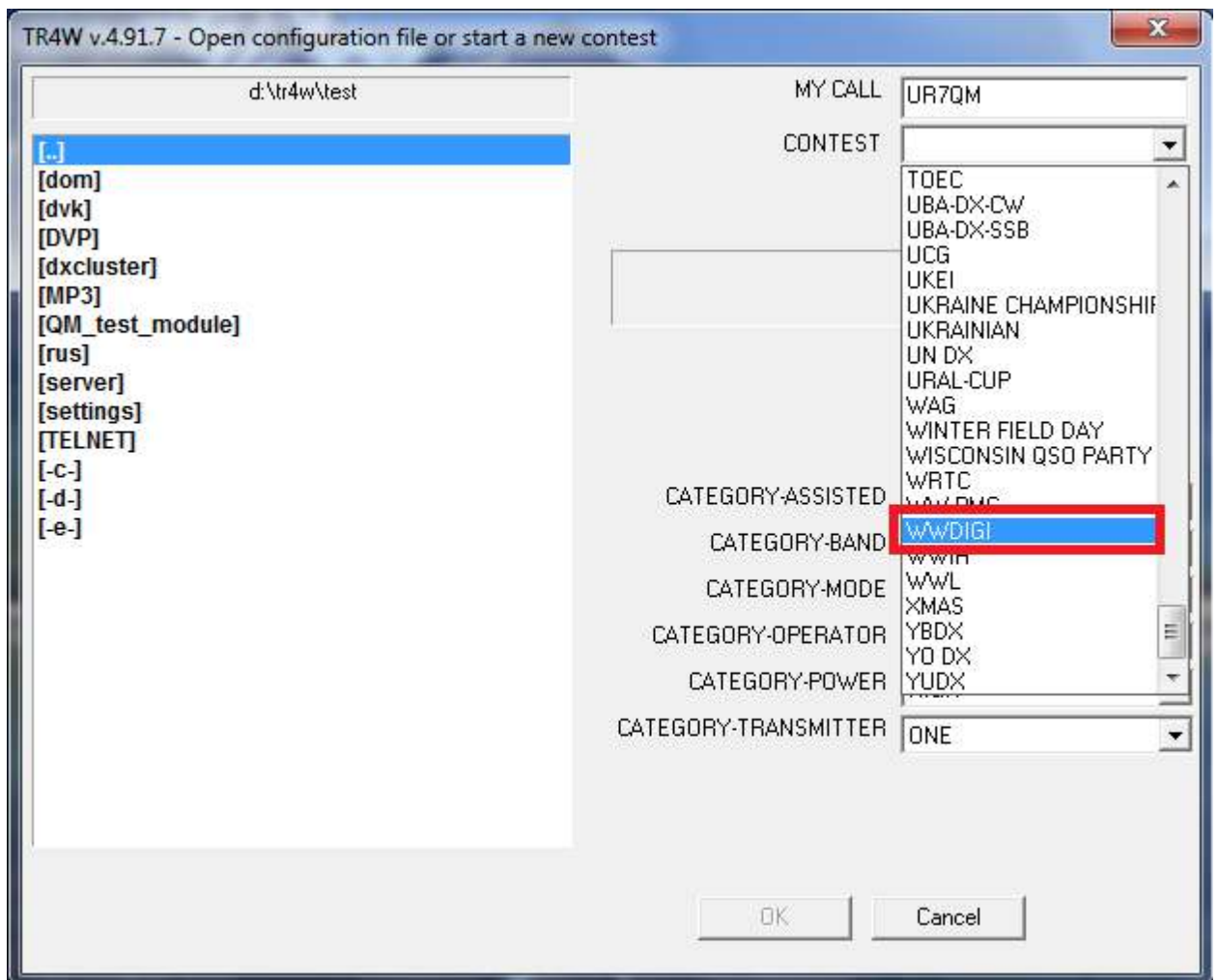


# Configuring WSJT-X together with TR4W for contests with FT8 / FT4 modes (for example, preparing for WWDIGI).

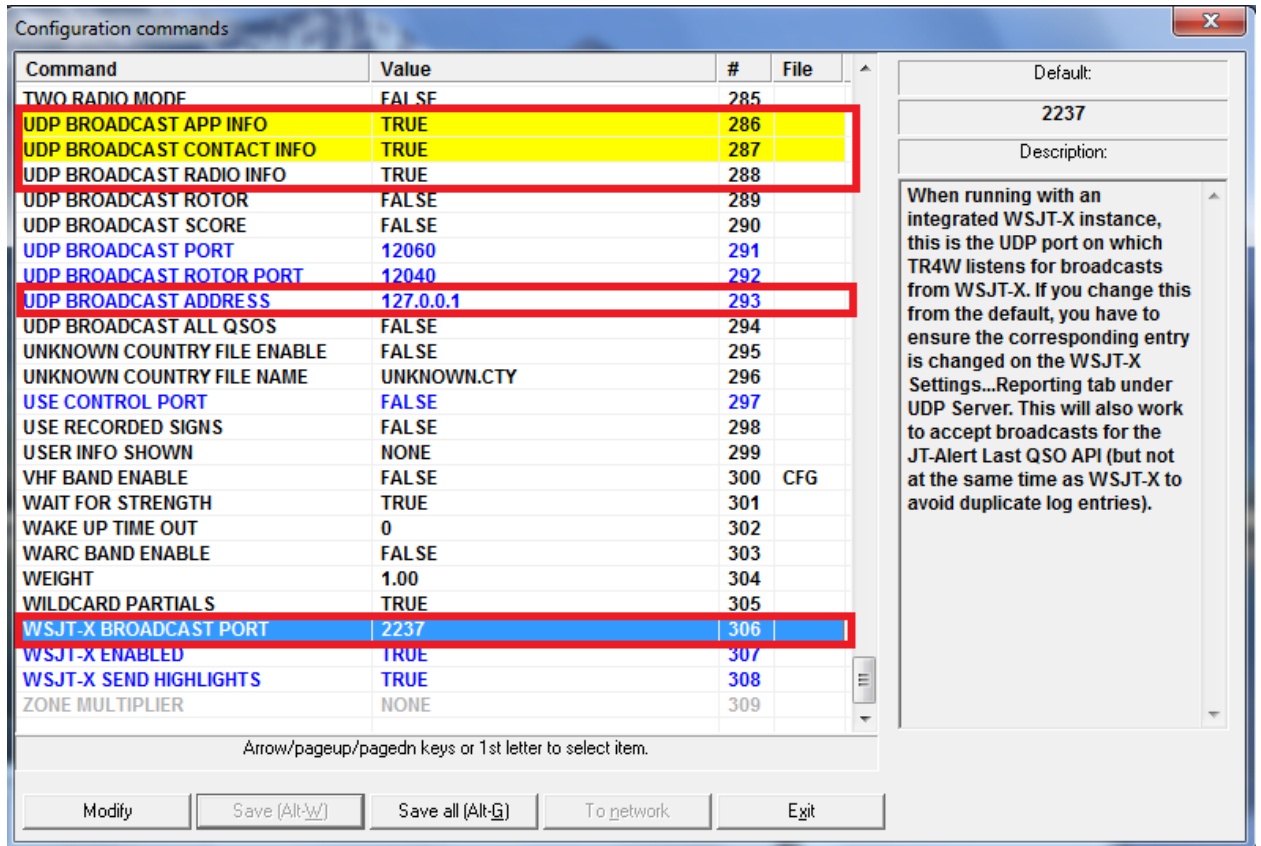
## 1. TR4W preparation

In conjunction with the WSJT-X program, TR4W handles the functions of logging, determining repeated connections, complete visual maintenance of contest statistics (points and multipliers in the corresponding windows), creating a report in Cabrillo format, an ADIF file and other information after the contest created by the program. Download and install **TR4W** software version [4.91.8](#) and up.

Select the appropriate contest in the program menu, for example, “WWDIGI”.



Open the program with the selected contest and in the **Ctrl-J** settings menu check the setting in the **UDP** commands of the values that are required to work with **WSJT-X**. Save everything.

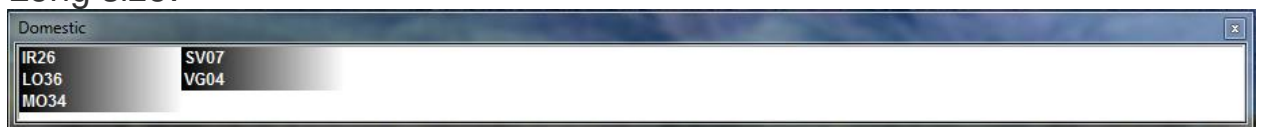


Set **Alt-B ( V )** to the desired band and select **Alt-M** mode for digital views of your transceiver ( **DATA, USB, USB-D** etc).

Connect the necessary windows for multiplier accounting.

**New:** the length of the cell size in the **Domestic** and **Prefixes** windows can be reduced by choosing **Default** in **Windows -> Mults**.

Long size:



Short size:



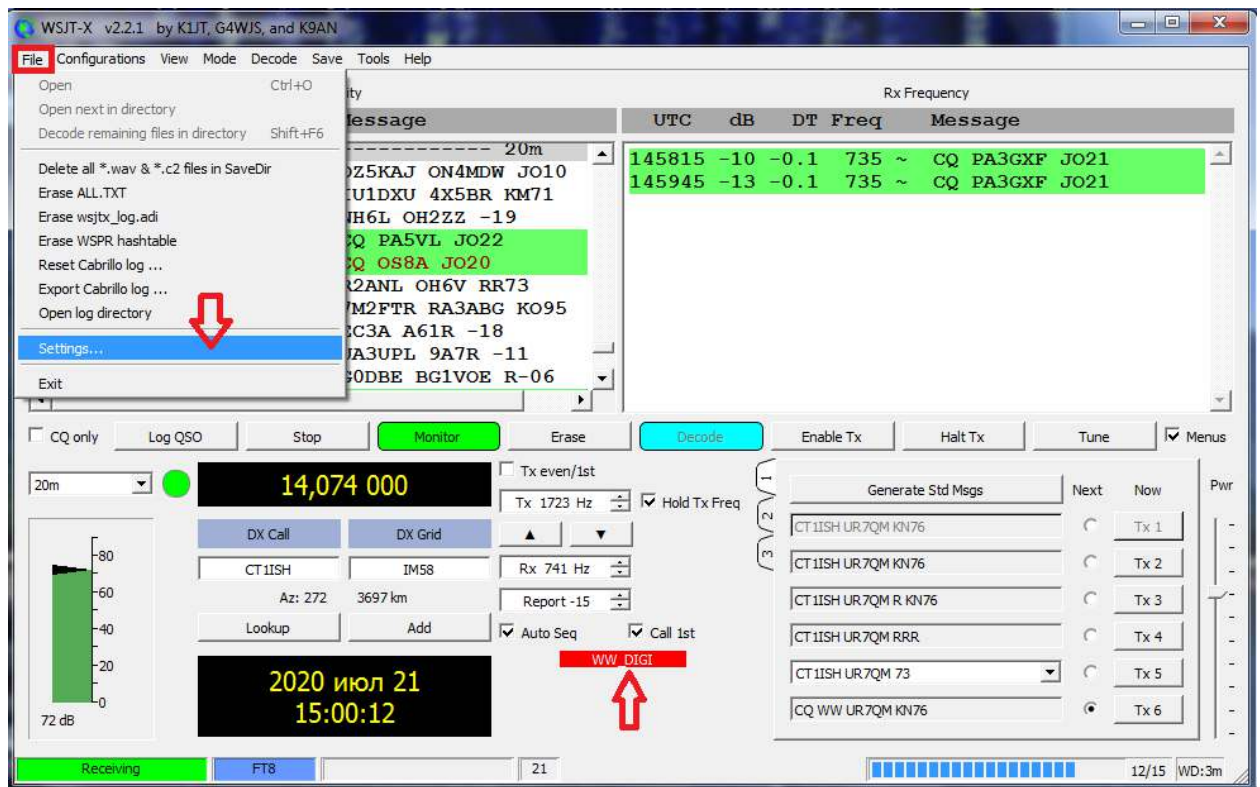
Leave **TR4W** enabled and proceed to configuring **WSJT-X**.

# 1. Preparing WSJT-X

Run the **WSJT-X** v.2.2.2 program.

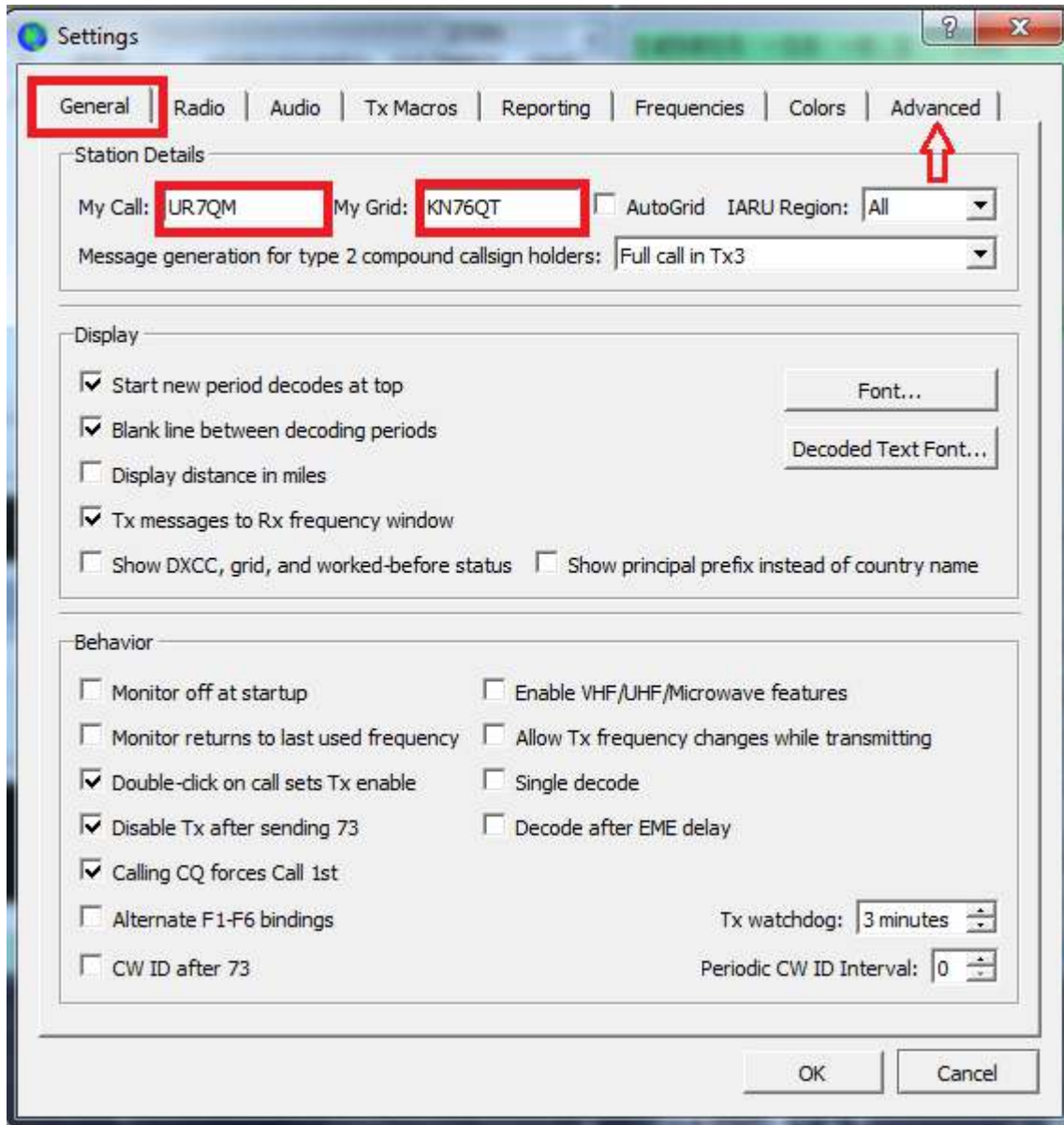
For contests with **FT8 / FT4** mods, users of the **WSJT-X** program can use special contest functions, for example, "**WW DIGI**" and others depending on the exchange conditions in this contest (see the "**Advanced**" tab below).

To activate this function, select "**File**" and then "**Setting**" in the main menu.

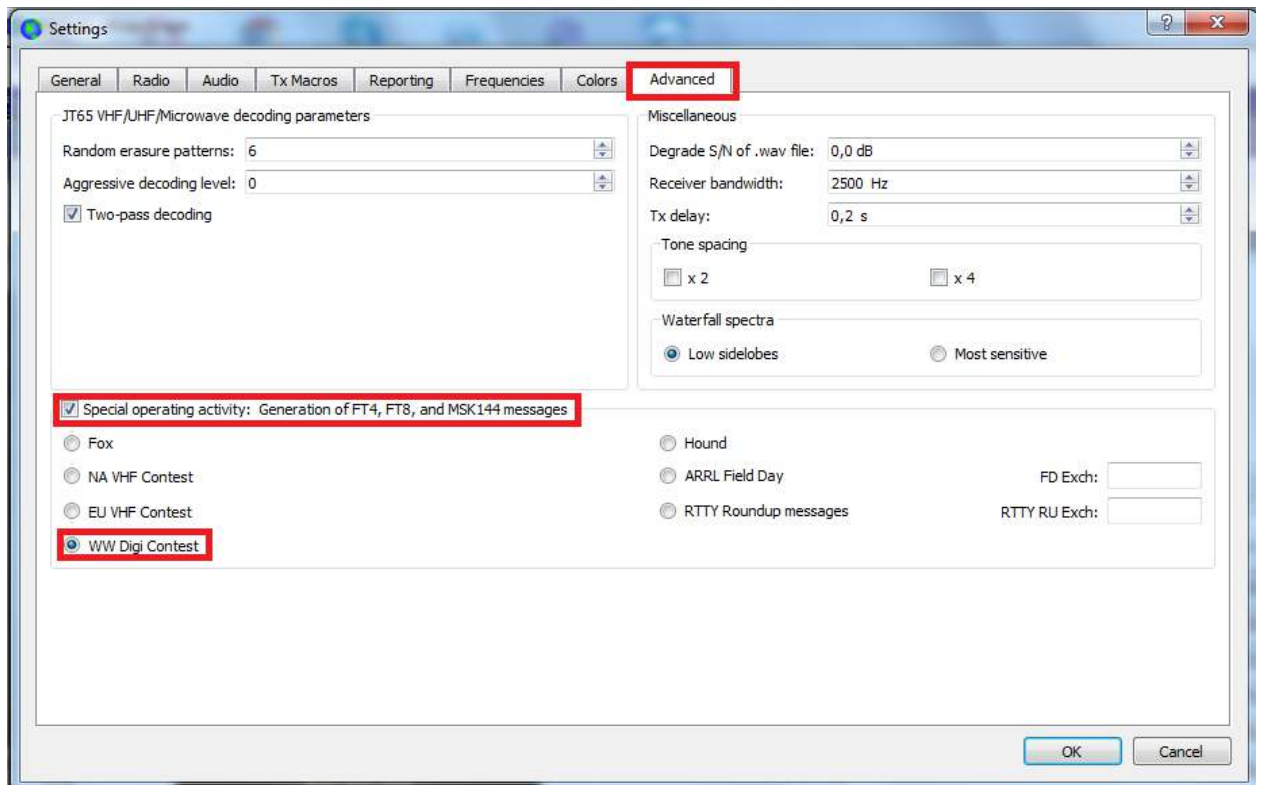


Then a dialog box with multiple tabs will appear.

In the “**General**” tab, you need to check the correctness of filling in your data, especially in the fields “**My Call**” and “**My Grid**”. Then select the “**Advanced**” tab.

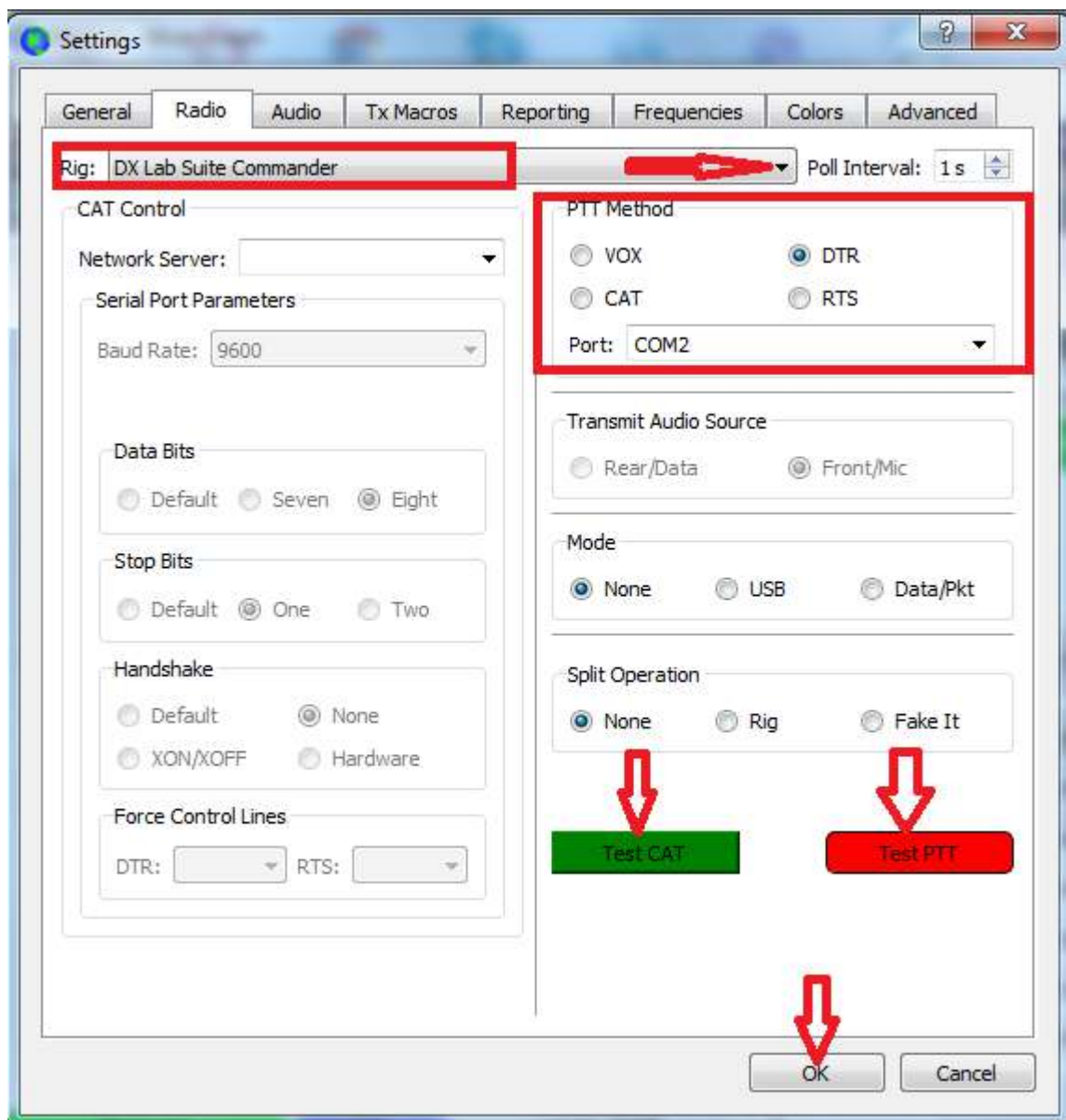


Set the **"flag"** in the **"Special operating activity ..."** box and select the **"dot"** required according to the exchange conditions, for example, **"WW DIGI Contest"**. Click the **OK** button.

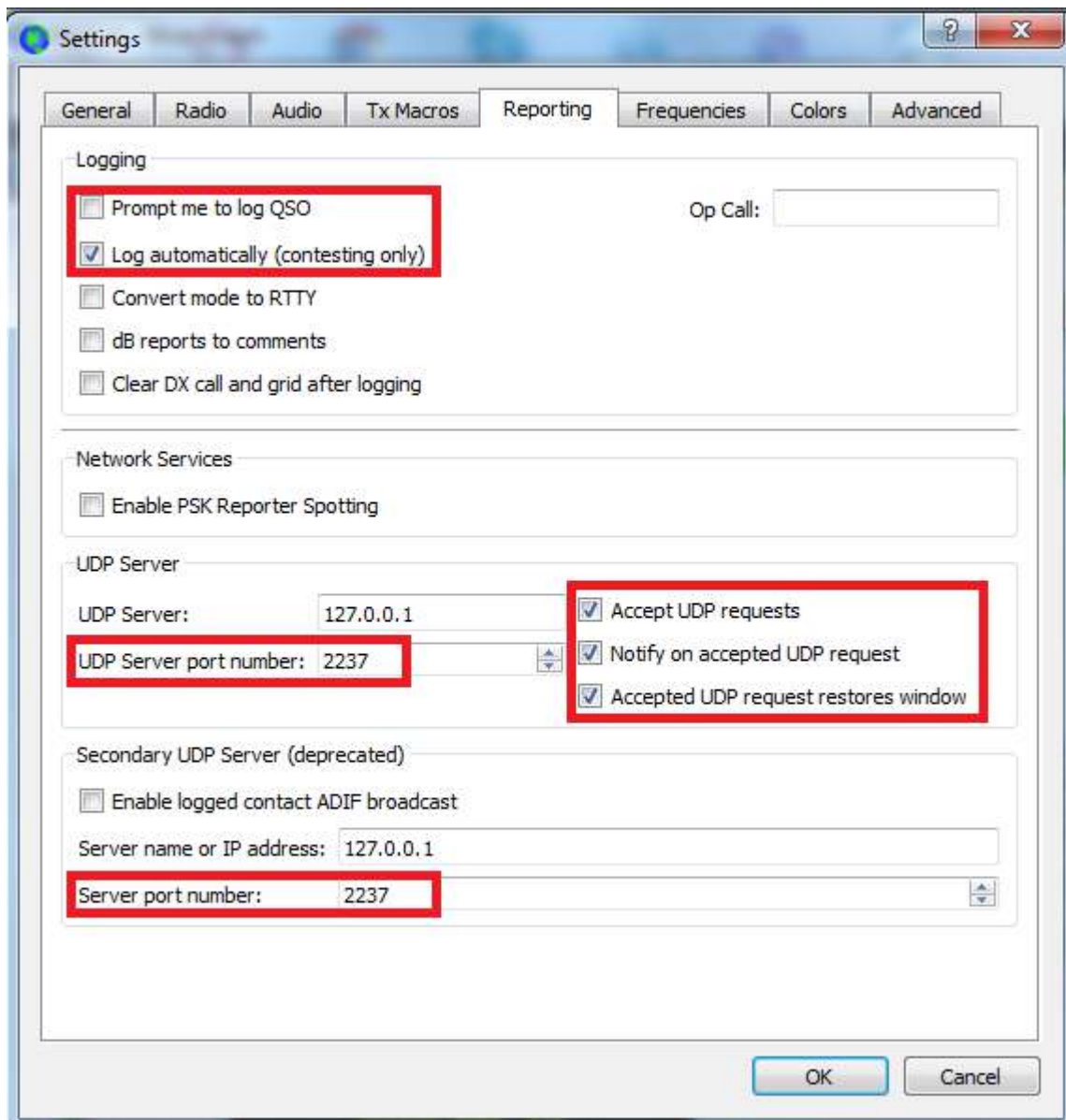


Go to the “**Settings**” -> “**Radio**” tab. In the **Rig** field select “**DX Lab Suite Commander**”. Set the **PTT Method** used for the **WSJT-X** program to work with your transceiver (via **CAT**, **COM** port or **VOX**).

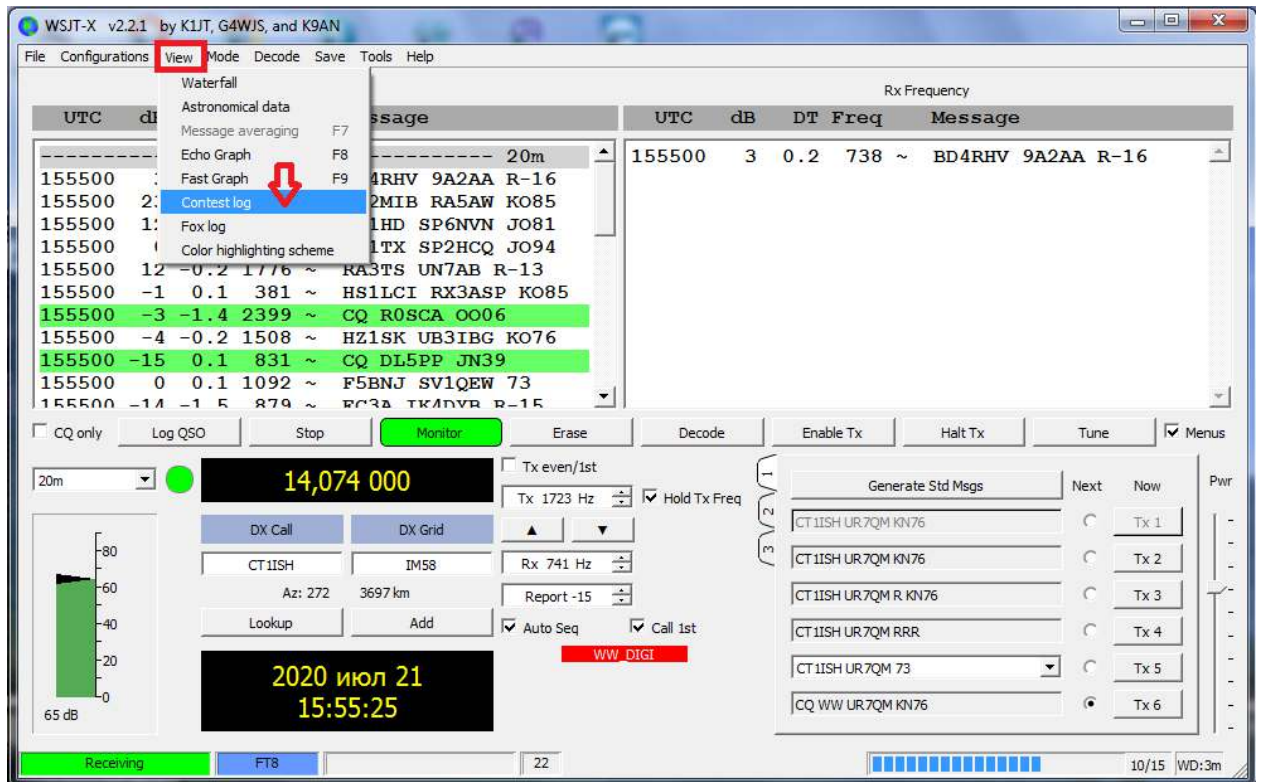
To test the performance of **CAT** and **PTT**, press the “**Test CAT**” button (should turn **green**), then “**Test PTT**” (should turn red). Appropriate coloring will confirm their work. Press the “**Test PTT**” button again (deactivate) and then “**OK**”.



To check that the default **UDP** ports 2237 are set correctly, as well as, if the operator wishes to automatically or manually enter the QSO into the log, open the “**Settings**” -> “**Reporting**” tab and set the necessary values and flags.



In the main menu of the program, select the "View" tab, then select "Contest Log" in it.



An empty log of the future contest will appear on the monitor.  
Approximate view of the log during the contest:

	Band	Freq (MHz)	Mode	Date & Time (UTC)	Call	Sent	Rcvd
165	15m	21,075	FT8	01.08.2020 09:19:45	TA4CS	KN76	KM37
166	15m	21,075	FT8	01.08.2020 09:16:45	LY1R	KN76	KO14
167	15m	21,075	FT8	01.08.2020 09:13:30	TA1BX	KN76	KN41



When working, in the “**Band activity**” window, the background of the **CQ** call is **yellow**, **B4** is **red**.

The screenshot displays the WSJT-X software interface during a contest. The main window is titled "WSJT-X - Wide Graph" and shows a frequency spectrum with a peak at 14,074,000 Hz. The "Band Activity" window is open, showing a list of received and transmitted callsigns. The "Contest Log" window is also open, showing a list of contacts. The "TR4W" window is open, showing a table of contacts and a summary of the current contest status.

**Band Activity Window:**

UTC	dB	DT	Freq	Message	UTC	dB	DT	Freq	Message
150415	6	0.2	328	~ CQ SP3AMZ KN76	150315	-12	0.1	1942	~ CQ LZ5WW KN12
150415	-4	0.1	2084	~ CQ OZ4TX JO55	150336	Tx		1396	~ LZ5WW UR7QM KN76
150415	7	0.2	1519	~ CQ UR7ZY MO51	150345	0	0.1	1943	~ CQ LZ5WW KN12
150415	-15	0.4	1763	~ CQ ON4DMV JO10	150400	Tx		1396	~ LZ5WW UR7QM R KN76
150415	-7	-0.6	1227	~ CQ CT1BCB IN50	150403	Tx		1396	~ LZ5WW UR7QM 73
150415	-15	0.1	262	~ CQ VA7ZDX CN89	150415	3	0.1	1943	~ CQ LZ5WW KN12
150415	-15	-0.4	2865	~ CQ BH4TVU RM01					
150415	3	0.1	1943	~ CQ LZ5WW KN12					

**Contest Log Window:**

Band	Freq (MHz)	Mode	Date & Time (UTC)	Call	Sent	Ro
	14.08.2020	15:04:03	LZ5WW	KN76	KN	
	14.08.2020	14:51:00	EW8AAA	KN76	KO	
	14.08.2020	14:48:30	IU1MRH	KN76	JN	
	14.08.2020	14:37:28	L26DX	KN76	KN	
	14.08.2020	12:52:00	SP3AMZ	KN76	JO	

**TR4W Window:**

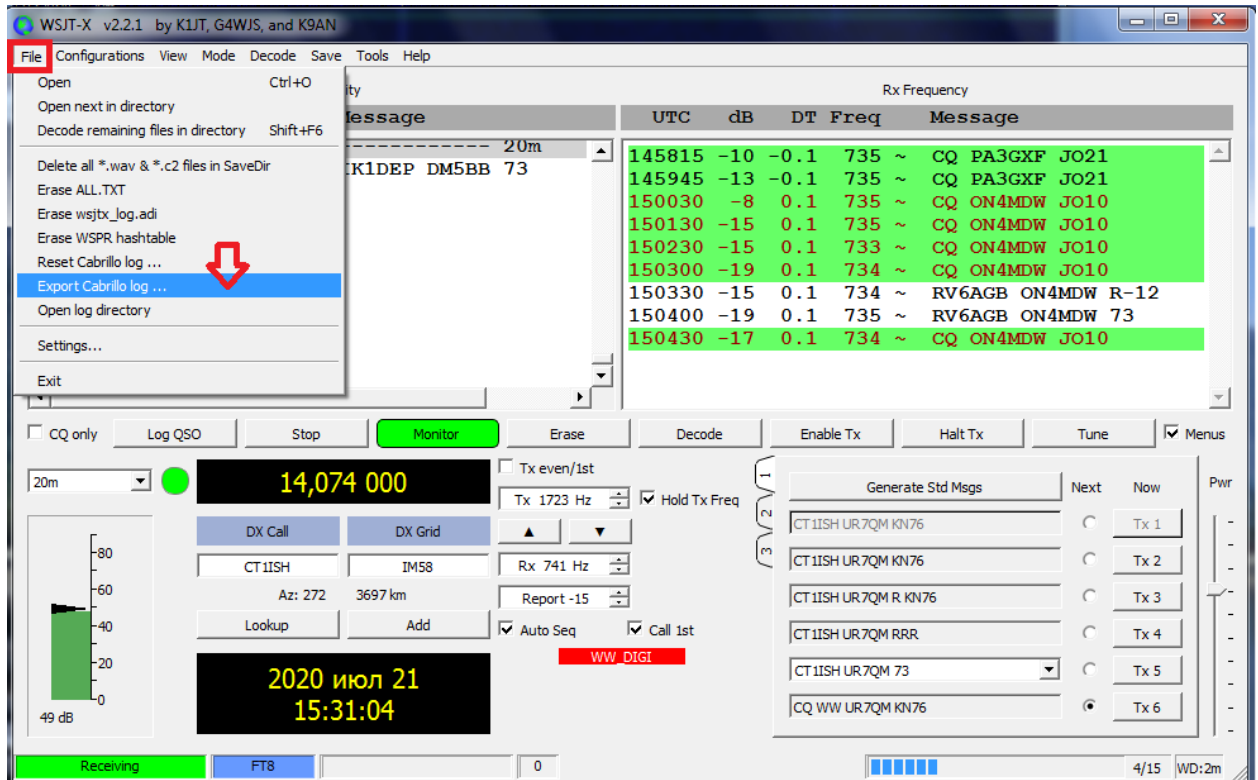
Band	Date	UTC	Qs S	Call sign	QTH	Pts	M	Id	S	D	Freq	Op
20DIGI	14-08-20	12:52	1	SP3AMZ	JO81	1	d				14074.00	UR7QM
20DIGI	14-08-20	14:48	2	IU1MRH	JH45	1	d				14074.00	UR7QM
20DIGI	14-08-20	14:51	3	EW8AAA	KO42	1	d				14074.00	UR7QM
20DIGI	14-08-20	15:04	4	LZ5WW	KN12	1	d				14074.00	UR7QM

**Summary:** LZ 249 1052km 0325z/1723z. Bulgaria. 17:04 Fri. INSERT. CQ: 4 SP: 0. This hr = 0 Rate = 0 CQ total: 0.

After the end of the contest, create a report in **Cabrillo** format. The operator has two options for this.

1. In the **TR4W** program, **Cabrillo** is formed in the usual way with the correct scoring, and it is also possible to view and save various messages about the past contest.

2. **WSJT-X** also builds Cabrillo, but no additional messages. To do this, select "**Export Cabrillo log**" from the "**File**" menu.



In the dialog box that opens, fill in all the fields according to your data.  
**"Save"**

WSJT-X - Export Cabrillo

Location:

Contest:

Callsign:

Category-Operator:

Category-Transmitter:

Category-Power:

Category-Assisted:

Category-Band:

Claimed-Score:

Operators:

Club:

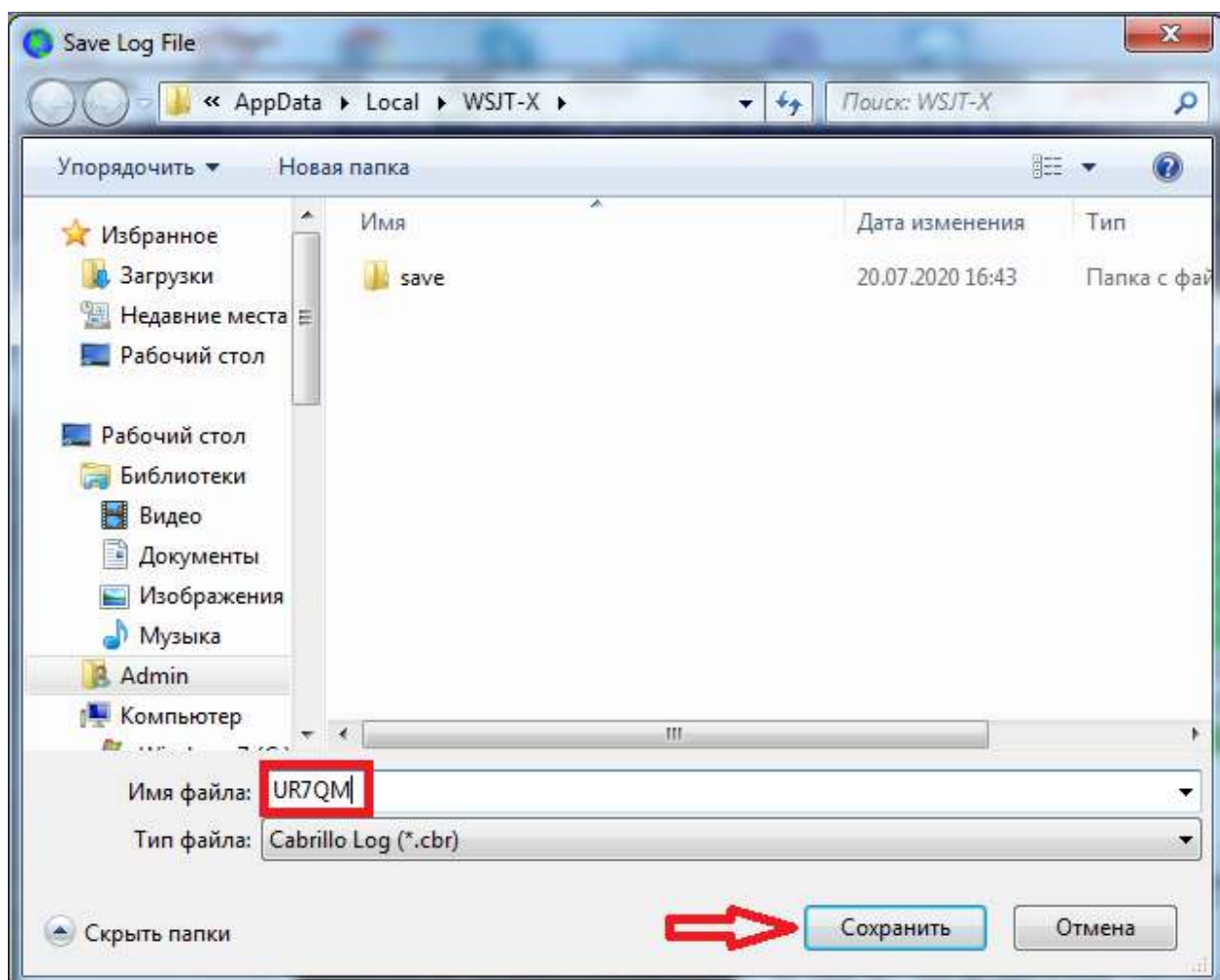
Name:

Address:

Address:

Save Cancel

In the file saving dialog box that opens, specify the folder where your log will be saved, remember this folder, then enter the file name with callsign in **CAPITAL LETTERS** and complete the procedure by clicking the **"Save"** button.



The log is ready to be sent.

To return the program to daily operation, in the **"Advanced"** tab, remove the **"flag"** in the **"Special operating activity"** line box and click the **"OK"** button, and restore the **CAT** and **PTT** method in the **"Settings"** -> **"Radio"** tab.

**Many thanks** to **Tom NY4I** and **Howie N4AF** for many days of work on the project for adapting **TR4W** to **WSJT-X**.

**P.S.** This guide does not claim to be the ultimate truth. Comments, corrections and practical suggestions are accepted.

**73! UR7QM** 19.08.2020